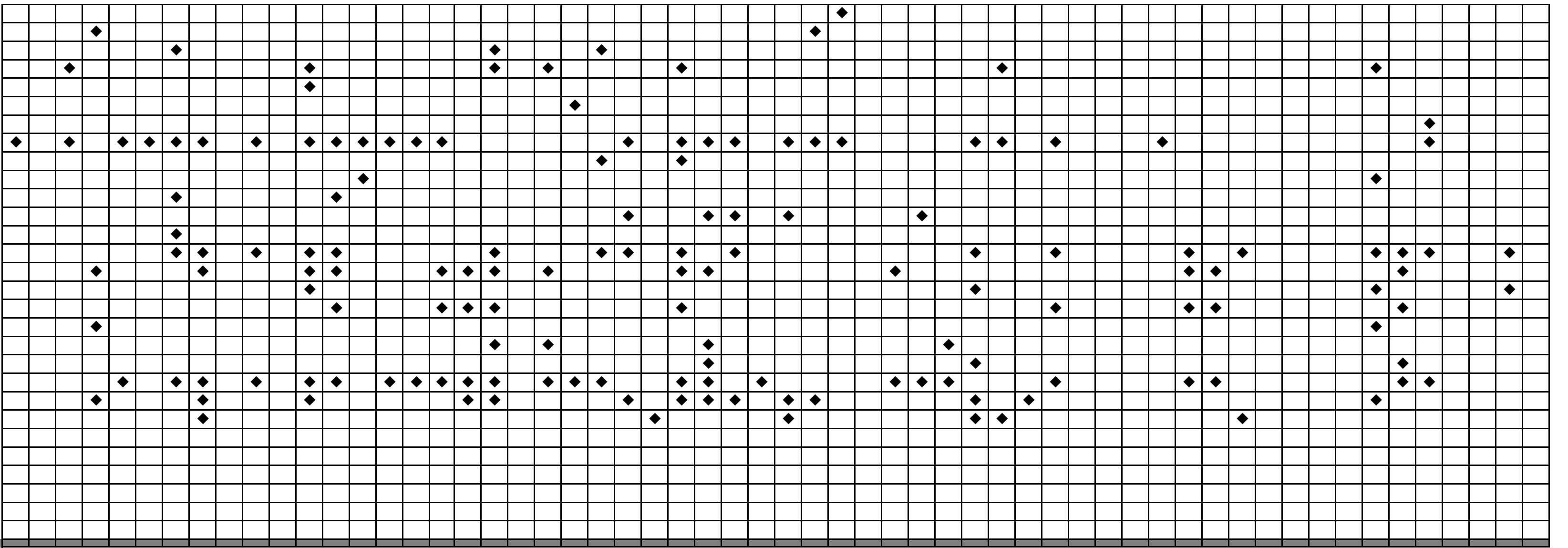


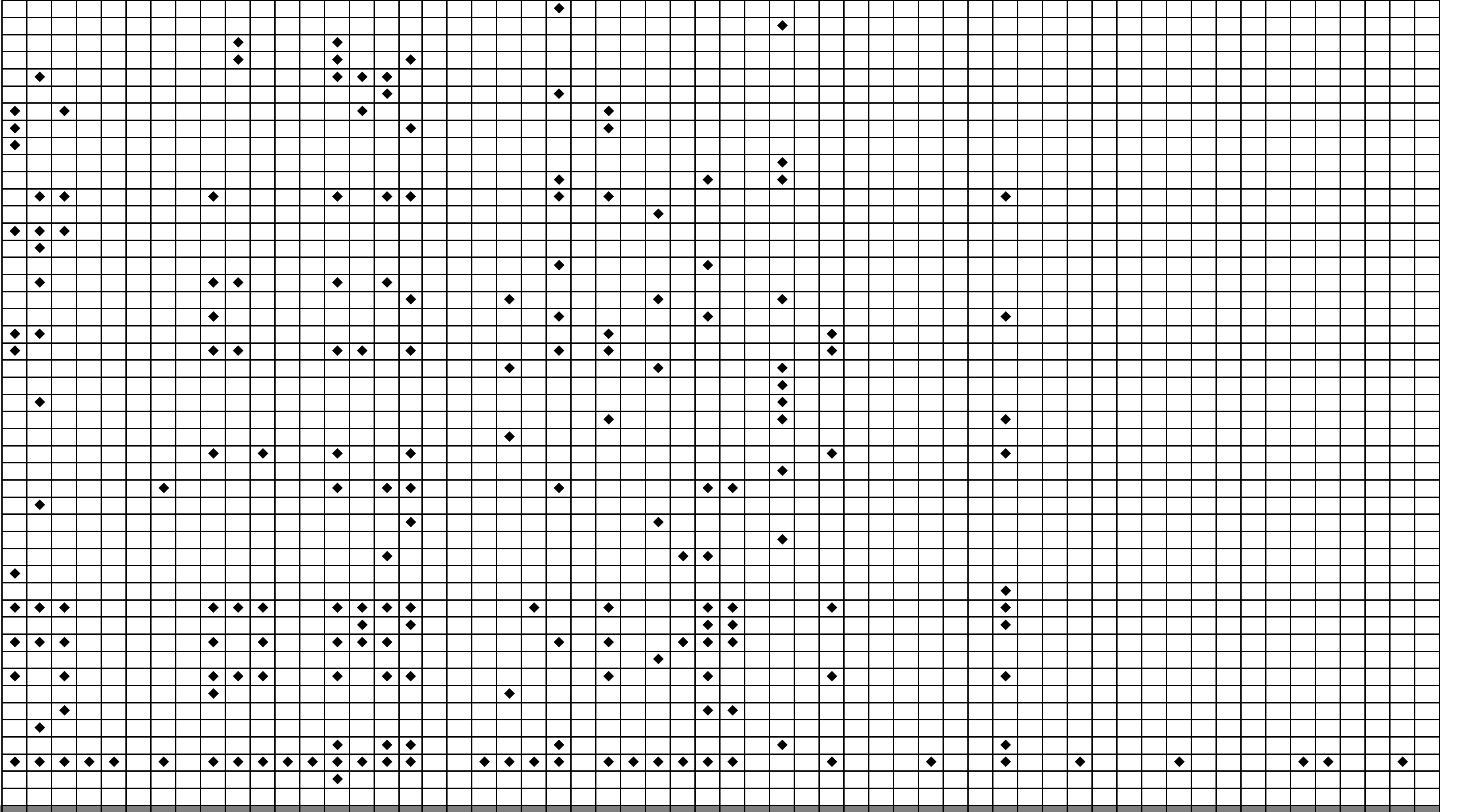
<h1>ALL TUTORIALS</h1>	DRY COLOURED PENCIL ONLY CONTAINS WATERCOLOUR PENCILS																													
	30 Species: Fox, Cat Eye Study, Little Owl, European Bee-Eater, Wolf Eyes, S/T Butterfly, Max (Springer Spaniel), Nuthatch, Great Spotted Woodpecker, Giraffes, Raven, Bluetit on Wych Elm, Horse Eye Study, German Shepherd, Stag/Deer, Miller (English Bulldog), Kookaburra, Willow Tit, Kestrel, White Tailed Eagle, Kingfisher, Singing Wren, Flamingo, Sparrow in Flight, Horse, Sparrowhawk, Peacock, Zebra, Robin, Song Thrush, Waxwing, Lilac Breasted Roller, Monochrome Wren, Heron, American Goldfinch, Red Squirrel, Anna's Hummingbird, Rainbow Lorikeets, Barred Owl, Belted Kingfisher, European Goldfinch, Northern Cardinal, Keel Billed Toucan, Red-Bellied Woodpecker, European Badger, Golden Eagle, Eastern Bluebird, Osprey, Female Cardinal, Bee & Thistle, Snow Leopard, Green bee-eater, Blue Jay, Barn Owl, Fly Agaric Fungus, Siskin & Berries, Great Green Macaw																													
<p><b>Paper</b></p> <ul style="list-style-type: none"> <li>Fabiano Artistic</li> <li>Drafting Film</li> <li>Fabiano Black Black</li> <li>Rising Museum Board (alt. Fabriano)</li> <li>Clairefontaine Pastelmat</li> </ul> <p><b>Other Materials</b></p> <ul style="list-style-type: none"> <li>Electric Eraser</li> <li>Blending Pencil</li> <li>Craft Knife/Slice Knife Tool</li> <li>Water, Cotton Bud, Small Brush</li> <li>White Neocolor II + Paintbrush</li> <li>Titanium White Powder</li> <li>Cotton Buds/Q-tips</li> <li>Colour Shaper (Soft, Size 6)</li> </ul> <p><b>Faber Castell Polychromos</b></p>	<p>Beige Red (formerly Light Flesh)</p> <p>Bistre</p> <p>Black</p> <p>Bluish Turquoise</p> <p>Brown Ochre</p> <p>Burnt Carmine</p> <p>Burnt Ochre</p> <p>Burnt Sienna</p> <p>Burnt Umber</p> <p>Cadmium Orange</p> <p>Cadmium Yellow</p> <p>Cadmium Yellow Lemon</p> <p>Caput Mortuum</p> <p>Caput Mortuum Violet</p> <p>Chrome (formerly Chromium) Green Opaque</p> <p>Chrome Oxide Green</p> <p>Cinnamon</p> <p>Cobalt Blue</p> <p>Cobalt Turquoise</p> <p>Cold Grey I</p> <p>Cold Grey II</p> <p>Cold Grey III</p> <p>Cold Grey IV</p> <p>Cold Grey V</p> <p>Cold Grey VI</p> <p>Coral (formerly Medium Flesh)</p> <p>Cream</p> <p>Crimson</p> <p>Dark cadmium Orange</p> <p>Dark Cadmium Yellow</p> <p>Dark Chrome Yellow</p> <p>Dark Indigo</p> <p>Dark Naples Ochre</p> <p>Dark Red</p> <p>Dark Sepia</p> <p>Deep Red</p> <p>Delft Blue</p> <p>Earth Green Yellowish</p> <p>Earth Green</p> <p>Fuchsia</p> <p>Green Gold</p> <p>Indanthrene Blue</p> <p>Indian Red</p> <p>Ivory</p> <p>Leaf Green</p> <p>Light Cadmium Red</p> <p>Light Cadmium Yellow</p> <p>Light Chrome Yellow</p> <p>Light Cobalt Turquoise</p> <p>Light Green</p> <p>Light Magenta</p> <p>Light Phthalo Blue</p> <p>Light Phthalo Green</p> <p>Light Purple Pink</p> <p>Light Red Violet</p> <p>Light Ultramarine</p> <p>Light Yellow Ochre</p> <p>Manganese Violet</p> <p>Mauve</p> <p>May Green</p> <p>Middle Cadmium Red</p> <p>Middle Phthalo Blue</p> <p>Middle Purple Pink</p> <p>Naples Yellow</p> <p>Nougat</p> <p>Olive Green Yellowish</p> <p>Orange Glaze</p> <p>Pale Geranium Lake</p> <p>Permanent Green Olive</p> <p>Phthalo Blue</p> <p>Pine Green</p> <p>Pompeian Red</p> <p>Raw Umber</p> <p>Red Violet</p> <p>Scarlet Red</p> <p>Sky Blue</p> <p>Terracotta</p> <p>Ultramarine</p> <p>Van Dyke Brown</p> <p>Venetian Red</p> <p>Violet</p> <p>Walnut Brown</p> <p>Warm Grey I</p> <p>Warm Grey II</p> <p>Warm Grey III</p> <p>Warm Grey IV</p> <p>Warm Grey V</p> <p>Warm Grey VI</p> <p>White</p>																													
<p><b>Caran d'Ache Luminance</b></p>	<p>Anthraquinoid Pink</p> <p>Apricot</p> <p>Beryl Green</p> <p>Bismuth Yellow</p> <p>Black</p> <p>Brown Ochre</p> <p>Brown Ochre 10%</p> <p>Brown Ochre 50%</p> <p>Buff Titanium</p> <p>Burnt Ochre</p> <p>Burnt Ochre 10%</p> <p>Burnt Sienna</p> <p>Burnt Sienna 10%</p> <p>Burnt Sienna 50%</p> <p>Carmine Lake</p> <p>Cassell Earth</p> <p>Cobalt Green</p> <p>Cornelian</p> <p>Dark English Green</p> <p>Dark Flesh</p> <p>Dark Flesh 5%</p> <p>Dark Sap Green</p> <p>French Grey</p> <p>French Grey 10%</p> <p>Genuine Cobalt Blue</p> <p>Golden Bismuth Yellow</p> <p>Grass Green</p> <p>Green Ochre</p> <p>Hercurlanum Red</p> <p>Ice Blue</p> <p>Indanthrene Blue</p> <p>Indian Yellow</p> <p>Lemon Yellow</p> <p>Light Aubergine</p> <p>Light Blue</p> <p>Light Cobalt Blue</p> <p>Light Flesh 10%</p> <p>Light Malachite Green</p> <p>Manganese Violet</p> <p>Middle Cobalt Blue</p> <p>Middle Verdigris</p> <p>Moss Green</p> <p>Naples Ochre</p> <p>Olive Brown</p> <p>Olive Brown 10%</p> <p>Olive Brown 50%</p> <p>Olive Yellow</p> <p>Payne's Grey</p> <p>Payne's Grey 30%</p> <p>Payne's Grey 60%</p>																													

Periwinkle Blue  
 Permanent Red  
 Pink White  
 Primrose  
 Purplish Red  
 Raw Sienna  
 Raw Umber  
 Raw Umber 10%  
 Russet  
 Scarlet  
 Sepia  
 Sepia 10%  
 Sepia 50%  
 Silver Grey  
 Slate Grey  
 Spring Green  
 Steel Grey  
 Turquoise Blue  
 Ultramarine Violet  
 Violet  
 Violet Grey  
 White  
 Yellow Ochre



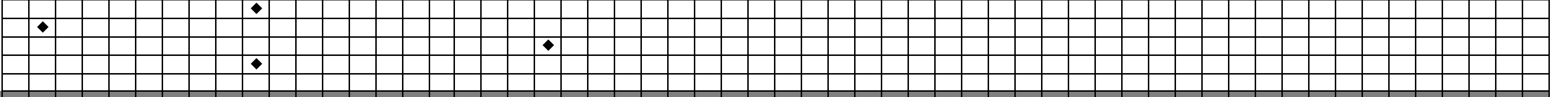
**Caran d'Ache Museum Aquarelle (Watercolour Pencils)**

Anthraquinoid Pink  
 Apricot  
 Brown Ochre  
 Brown Olive 50%  
 Burnt Sienna 50%  
 Carmine Lake  
 Cassell Earth  
 Chestnut  
 Cinnamon  
 Cobalt Green  
 Cornelian  
 Dark Flesh 50%  
 Dark Sap Green  
 French Grey  
 Genuine Cobalt Blue  
 Gold Cadmium Yellow  
 Ivory Black  
 Light Blue  
 Light Cadmium Red  
 Light Cobalt Blue  
 Light Flesh 10%  
 Light Malachite Green  
 Manganese Violet  
 Middle Cobalt Blue  
 Naples Ochre  
 Orange  
 Payne's Grey  
 Periwinkle Blue  
 Primrose  
 Prussian Blue  
 Phthalocyanine Blue  
 Purplish Red  
 Raw Umber  
 Saffron  
 Scarlet  
 Sepia 10%  
 Sepia 50%  
 Slate Grey  
 Spring Green  
 Steel Grey  
 Ultramarine Violet  
 Umber  
 Violet  
 Violet Pink  
 White  
 Yellow Ochre



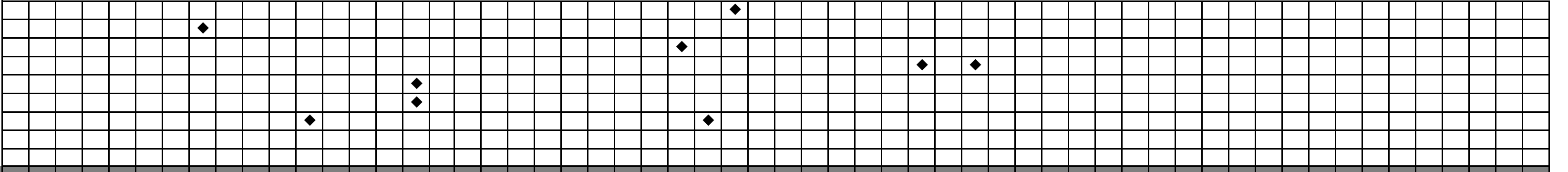
**Derwent Lightfast**

Apricot  
 Chocolate  
 Mars Orange  
 Venetian Red



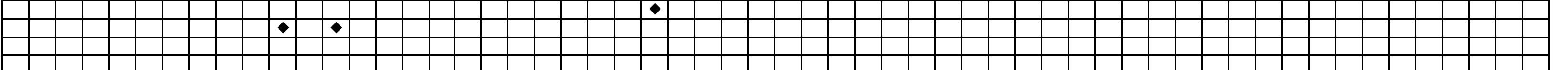
**Caran d'Ache Pablo**

Blueish Pale  
 Brownish Beige  
 Middle Cobalt Blue  
 Olive Gray  
 Pink  
 Raspberry Red  
 Ultramarine Blue



**Derwent Drawing**

Crag Green  
 Ivory Black



Number of tutorials used in:

37  
7  
1  
11  
1

27  
26  
19  
21  
8  
2  
1  
8

2  
1  
54  
2  
1  
3  
1  
19  
26  
3  
4  
1  
1  
9  
3  
2  
4  
6  
1  
4  
1  
12  
14  
2  
12  
2  
2  
2  
1  
2  
1  
29  
2  
2  
48  
4  
2  
1  
4  
1  
2  
4  
4  
8  
7  
2  
2  
2  
3  
2  
1  
3  
1  
2  
1  
1  
2  
1  
1  
4  
4  
1  
1  
1  
8  
13  
1  
1  
5  
2  
2  
1  
1  
23  
2  
3  
6  
20  
3  
5  
1  
2  
27  
5  
8  
18  
5  
17  
2  
1

1  
1  
2  
6  
4  
5  
6  
2  
7  
2  
5  
3  
3  
14  
6  
2  
1  
1  
2  
2  
1  
10  
22  
2  
3  
2  
2  
8  
1  
5  
1  
2  
2  
3  
22  
8  
1  
1  
9  
6  
4  
4  
4  
16  
22  
5  
3  
2  
4  
1

1
2
3
7
1
1
25
2
2
2
5
1
18
14
4
9
2
4
3
25
14
6

1
1
2
3
4
2
4
3
1
1
3
9
1
3
1
2
5
4
4
4
9
3
3
1
2
3
1
6
1
7
1
2
1
3
1
1
16
5
13
1
12
2
3
1
6
33
1

1
1
1
1

1
1
1
2
1
1
2

1
2